

X2-3200G

PROVIDES THE DATA THAT COUNTS FOR NETWORK MONITORING

AGGREGATION, REPLICATION, L2-L4 FILTERING, LOAD BALANCING, PACKET SLICING, TIMESTAMPING

The Profitap X2-3200G is a high-end, high-density Network Packet Broker with a total throughput of 3.2 Tbps, offering packet slicing, timestamping, GTP IP filtering, GRE tunneling and de-tunneling, VXLAN de-tunneling, ERSPAN stripping, and many more features.

Featuring 32 QSFP28 ports (40/100 Gbps) the X2-3200G provides aggregation, replication, powerful filtering and load balancing in very high bandwidth port monitoring and analysis scenarios, all in a single 1U rack unit.

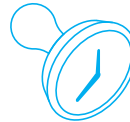


KEY FEATURES



PACKET SLICING

Remove payload that is irrelevant to network monitoring and security analysis, conserving disk space and load on capture devices.



TIMESTAMPING

Leverage accurate timing information for accurate forensic analysis, and legal and criminal investigation.



GTP IP FILTERING

Filter by IP in GTP sessions based on information contained in the data stream, identifying source and destination.



ERSPAN TUNNELING & DE-TUNNELING

Integrate the X2-3200G as a single, centralized point for ERSPAN stripping in a new or already existing monitoring system based on data ERSPAN encapsulation.

LICENSABLE ADVANCED ADDITIONS



GTP CORRELATION LICENSE

Stateful detection of mobile data sessions using subscriber ID (IMSI) to filter, replicate, and forward to the appropriate monitoring tools.

X2-3200G-LIC-G



PACKET DEDUPLICATION LICENSE

Optimize network efficiency and traffic storage eliminating redundant packet copies.

X2-3200G-LIC-D

TECHNICAL SPECIFICATIONS

CONNECTORS

32 x 100GbE QSFP28 ports
2 x 10GbE SFP+ I/O ports
1 x RJ45 management port
1 x RJ45 console port
1 x USB 2.0 port

DIMENSIONS (WxDxH)

440 x 430 x 44 mm — 17.32 x 16.93 x 1.73 in

INCLUDED ACCESSORIES

2 x 550 W, 80+ Platinum, 100–240 VAC, 50–60 Hz PSUs
2 x C13 AC power cords — 1 x RJ45 to serial port adapter
1 x Rack mounting kit

LEDS

1 x System status
1 x Fan status
1 x PSU1 status
1 x PSU2 status

WEIGHT

9.1 kg — 20 lbs

COMPLIANCE

RoHS
CE
FCC

HIGHLIGHTS

- Aggregation, replication, L2-L4 filtering, VLAN tagging and stripping, MPLS stripping and load balancing (any-to-any, any-to-many, many-to-many)
- Local and remote management (CLI, SSH, GUI, SNMP, Syslog)
- RESTful API support
- Flexible role-based management access
- In-line mode and in-line tool sharing
- 40GbE, 100GbE support
- Up to 128 x 10/25G SFP28 or 64 x 50G SFP56 logical ports via fanout cables
- Redundant, hot-swappable PSUs and fan modules

ORDER REFERENCES

Base licenses cover the following key features: Aggregation, Replication, L2-L4 filtering, GTP IP filtering, Load balancing, Packet slicing, Timestamping (ERSPAN), VLAN tagging, VLAN stripping, GRE tunneling, VXLAN de-tunneling, GRE de-tunneling and ERSPAN stripping.

BASE LICENSE

X2-3200G-16-AC
X2-3200G-32-AC
X2-3200G-UNLK

DESCRIPTION

HD NPB, 16 x 40G/100G QSFP28, 2 x 550W, 100–240 VAC PSUs
HD NPB, 32 x 40G/100G QSFP28, 2 x 550W, 100–240 VAC PSUs
HD NPB, upgrade from half port to full port license

ADVANCED LICENSABLE FEATURES

X2-3200G-LIC-D
X2-3200G-LIC-G

DESCRIPTION

De-duplication license
GTP correlation license

WARRANTY AND MAINTENANCE

X2-3200G-WAR-1YR
X2-MAIN-1YR

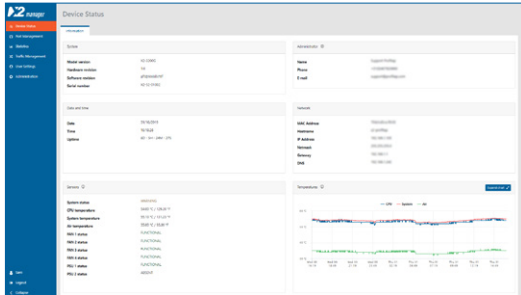
DESCRIPTION

X2-3200G extended warranty — 1 year
X2-3200G extended maintenance — 1 year (software updates, professional support)



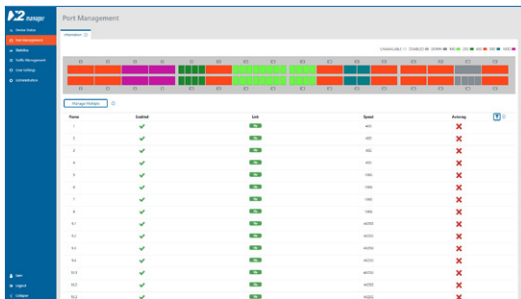


X2-Manager is a web-based interface integrated in every X2-3200G unit, allowing easy access to the configuration and monitoring of X2-3200G settings and behavior from any OS or platform.



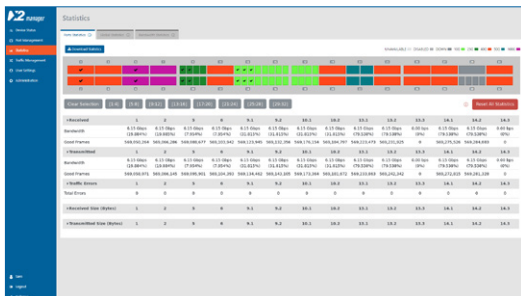
DEVICE STATUS

Device status offers a quick overview of operational statistics related to the packet broker hardware. Measured temperatures are recorded with a history of 72 hours, to allow filtering back in time on temperature statistics.



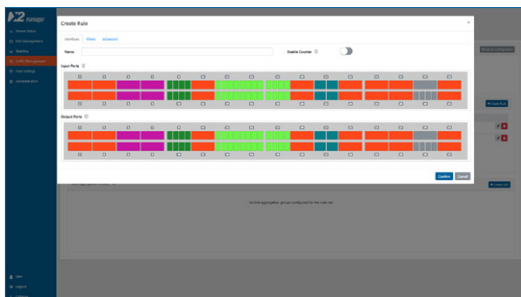
PORT MANAGEMENT

Port management offers instant overview of port status and speed. Users control the configuration of all QSFP modules, where each module offers additional information in the specific status section.



PORT STATISTICS

Port statistics displays and monitors the statistics counter for each of the device interfaces. Users can view or export this information for a later analysis. It is also possible to easily compare the traffic bandwidth on each port.



TRAFFIC MANAGEMENT

Define how the traffic will flow through the device interfaces. Using a direct control interface the user will be able to define aggregation, duplication and filtering rules. Advanced actions can be defined to manipulate the traffic, adding label information or stripping undesired headers.