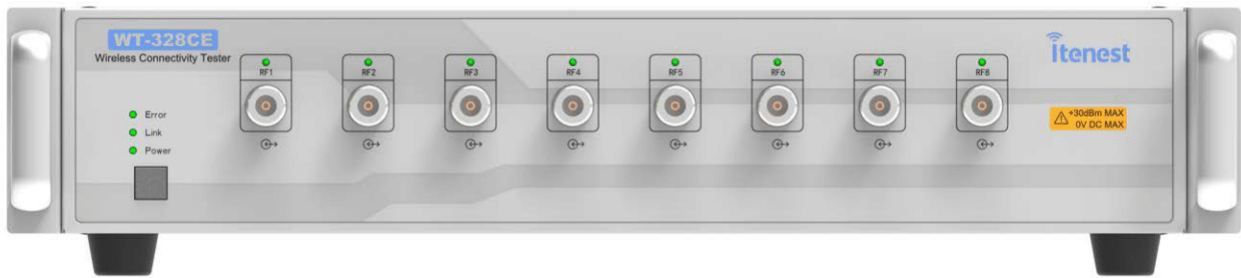


WT-328CE

Wireless Connectivity Tester



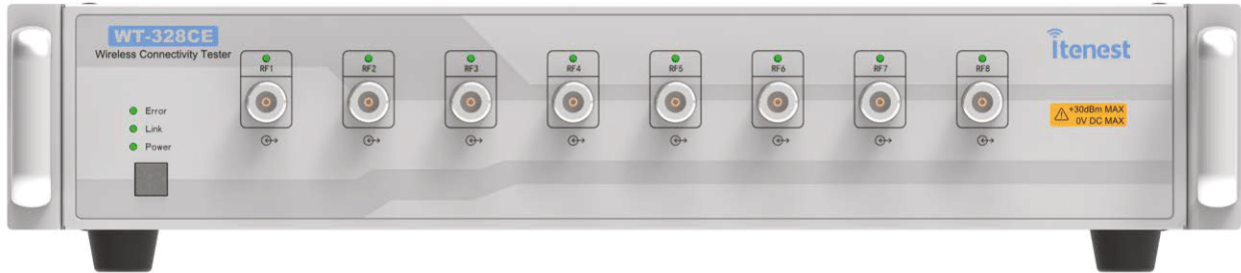

Itenest

NO.:ITENEST-WI-YX-92/A


KHUSHI COMMS
Empowering Innovative Solutions

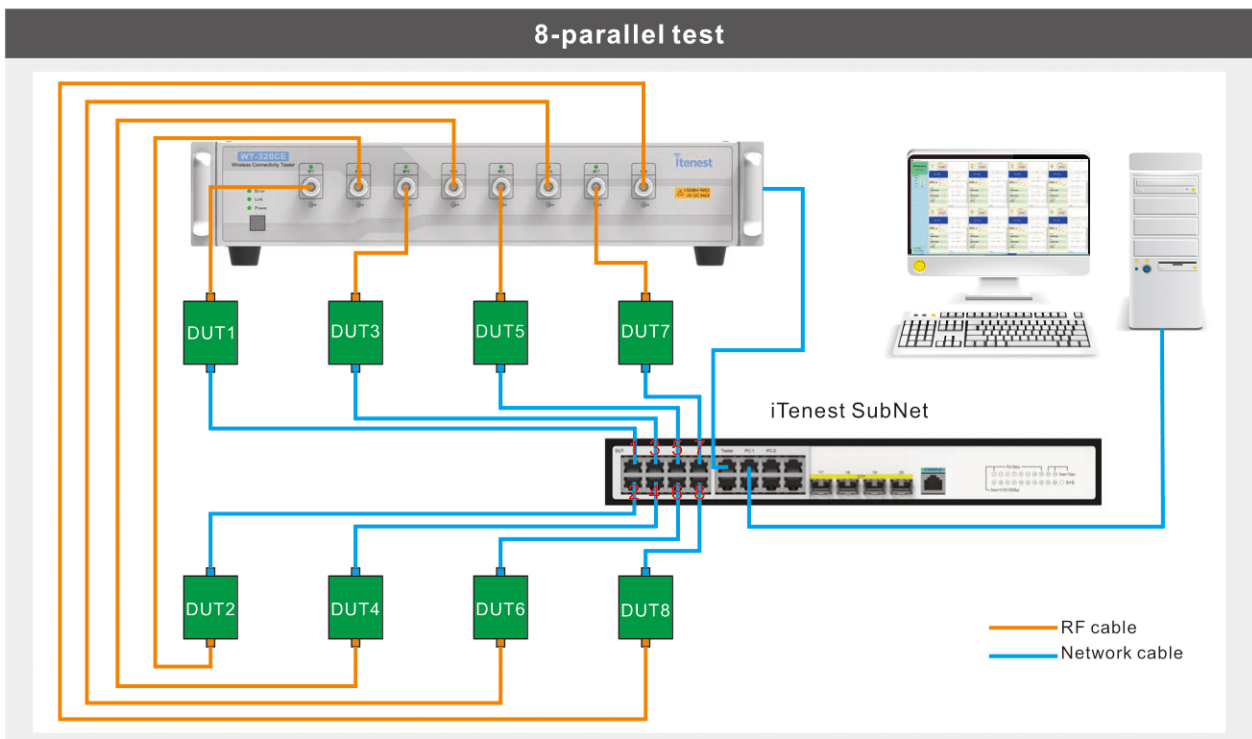
Introduction

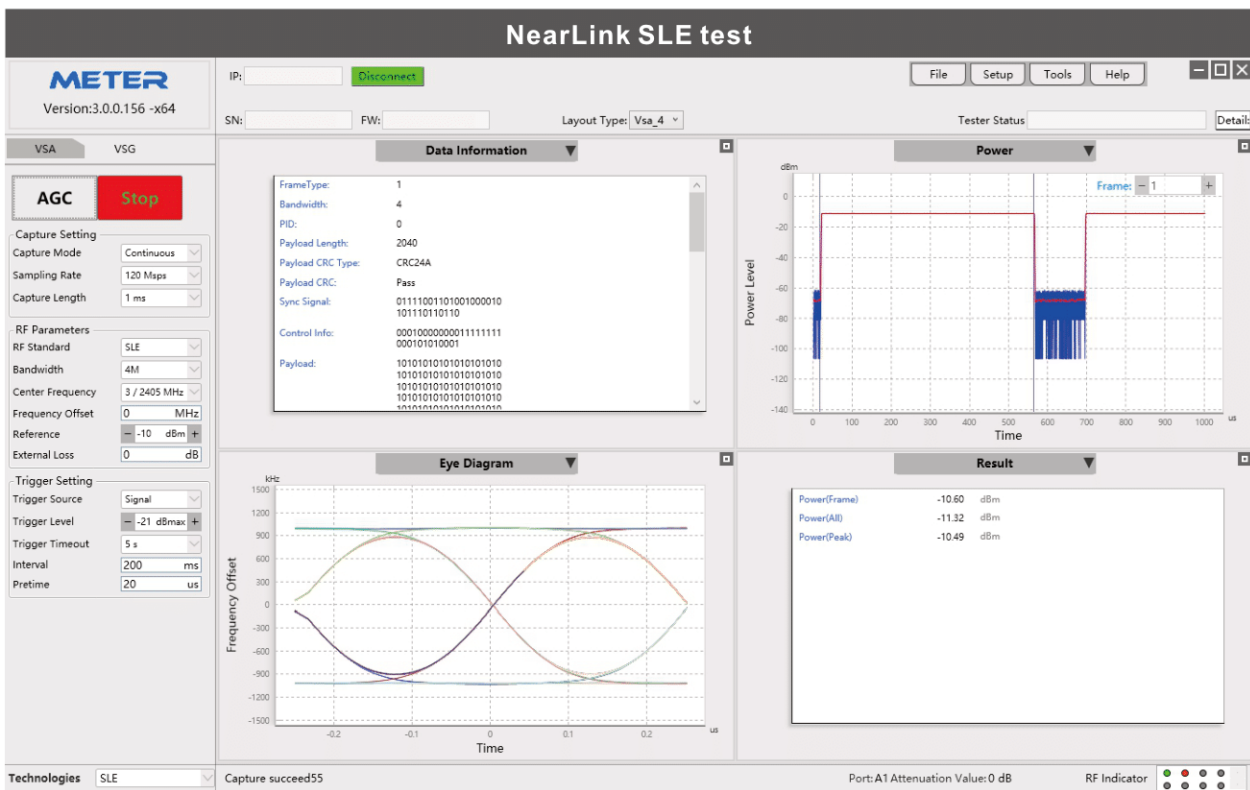
WT-328CE is a wireless connectivity tester for Wi-Fi 6/6E, Nearlink, short-range IoT modules, cellular modules and other products. It can be upgraded to support Wi-Fi 7 160M test. It provides users with a highly reliable and efficient user experience.



Key features

Wi-Fi 6E test	High efficiency
<ul style="list-style-type: none">Support Wi-Fi 6E;Upgrade to Wi-Fi 7(160M);Frequency bands: 400MHz-7.3GHz.	<ul style="list-style-type: none">Support VSG broadcasting greatly improve RX test efficiency;Support 8-port parallel testing.
Options for cellular IoT, Nearlink, etc.	High reliability
<ul style="list-style-type: none">NB-IoT and Cat 1/4, etc;SLE (Nearlink).	<ul style="list-style-type: none">Protected against DC voltages below 5V;Anti-static capacity up to 7KV (contact discharge).





Technical Specifications

General Technical			
Input/Output frequency range	400 MHz to 7300 MHz		
IF bandwidth	180 MHz		
Input power range	+30 dBm peak (+25 dBm average)		
Output power range(CW)	-8 dBm to -130 dBm		
Output power range (CW,Broadcast)	-23 dBm to -130 dBm		
Input power accuracy	Specification: ± 0.5 dB(+25 dBm to -40 dBm)		
	Typical: ± 0.3 dB(+25 dBm to -40 dBm)		
Output power accuracy	Specification:	± 0.75 dB (-8 dBm to -90 dBm) ± 1.50 dB (-90 dBm to -130 dBm)	
	Typical:	± 0.5 dB (-8 dBm to -90 dBm) ± 1.0 dB (-90 dBm to -130 dBm)	
Output power accuracy (Broadcast)	Specification:	± 1.0 dB (-23 dBm to -90 dBm) ± 1.50 dB (-90 dBm to -130 dBm)	
	Typical:	± 0.75 dB (-23 dBm to -90 dBm) ± 1.0 dB (-90 dBm to -130 dBm)	
EVM	Residual loopback EVM, full packet channel estimation (typical) - Power in/out at -20 dBm - Averaged over 20 packets	- Measured at 6825 MHz - 802.11ax waveform,160MHz,MCS 11	≤ -47 dB
Input/Output return loss	>13 dB		

Technologies

- 802.11ax(Wi-Fi 6/6E), 802.11ac(Wi-Fi 5), 802.11a/b/g/n/p/ba/az
- Wi-Fi: 802.11be(Wi-Fi 7) 160M
- Bluetooth(1.0/2.0/3.0/4.0/4.1/4.2/5.0/5.1/5.2)
- NearLink:SLE...
- Short-range IoT:ZigBee/Z-Wave/11ah/Wi-SUN/LoRa...
- Cellular IoT: LTE Cat 1~4, Cat NB1(NB-IoT)...
- GNSS:GPS,BDS...

KHUSHI COMMUNICATIONS PVT. LTD.

An ISO 9001: 2015 Company

Corporate Office: 705-706, 7th Floor, Kirti Shikhar Building, District Centre, Janakpuri, New Delhi-110058. INDIA.

Registered Office: C-29, 1st Floor, New Krishna Park, VIKASPURI, New Delhi-110018. INDIA.

Phone: +91-11-41615459 | E: info@khushicomms.com | W: www.khushicomms.com